

# ECO-INDUSTRIAL SOLUTIONS LTD

## TILBURY ECO-INDUSTRIAL PARTNERSHIP PROJECT

EIN OPPORTUNITIES IN THE TILBURY INDUSTRIAL AREA  
DELTA, BRITISH COLUMBIA, CANADA

### Project Goal

An EIN & Municipal Demand Side Management (DSM) Benefits study was conducted for the Greater Vancouver Regional District to identify industrial clusters in the region that would have the highest potential for EIN. The Tilbury Industrial Area was selected for a more detailed Eco-Industrial Park project. The first phase, Stakeholder Engagement & Capacity Building is now complete and partners are now seeking funding for Phase 2: EIN Opportunity Assessment.



Courtesy of Corporation of Delta



### Work Completed To Date

#### EIN & Municipal DSM Benefits Study

There is potential for significant material and energy (and financial) savings at Tilbury Industrial Park. For example, Tilbury Industrial Park could:

- reduce its natural gas consumption by 300,000 GJ/y or 26%, an annual savings of \$2.4 million
- reduce its electricity consumption by 61,000,000 kWh/y or 37%, an annual savings of \$4 million
- reduce its wastewater generation from permitted industries by 25%
- reduce potable water consumption by 25%
- reduce truck trips by 200,000 trips per year, or 25%
- eliminate 15,000 eCO<sub>2</sub> t/y of greenhouse gas emissions

#### Phase 1: Stakeholder Engagement and Capacity Building Workshop

Phase 1 of the Tilbury Eco-Industrial Park Project was the design and implementation of a Stakeholder Engagement and Capacity Building Workshop. The workshop was uniquely tailored towards local businesses in the Tilbury area. Using the above data, local businesses were shown how EIN could be used to reduce material and energy consumption and save money.

### SNAPSHOT



### PROJECT SCALE

- Industrial park (600+ businesses)
- Individual corporations

### CLIENT

The Tilbury Eco-Industrial Partnership Advisory Committee (see partners)

### PARTNERS

- Corporation of Delta
- Delta Chamber of Commerce
- The Greater Vancouver Regional District
- Fraser Basin Council
- Taylor Munro Energy Systems
- DRS Earthwise
- Burns Bog Conservation Society
- Schenker Pacific Logistics
- Terasen Gas
- BC Hydro
- WestBay Sonship Yachts
- Pistol & Burnes Coffee
- Canadian Autoparts Toyota Inc.

### TECHNIQUE / TECHNOLOGY

- Multi-stakeholder process
- Workshop Design & Facilitation
- EIN opportunity assessment

In total, 36 businesses attended the EIN workshop, 24 of which indicated a willingness to participate in future project activities. One business committed to financial investment at this stage and many offered their in-kind support and interest in participating in the TEIP Advisory Committee. To view presentations from the workshop, go to [http:// www.corp.delta.bc.ca/eco-industrialpartnership/background.html](http://www.corp.delta.bc.ca/eco-industrialpartnership/background.html).

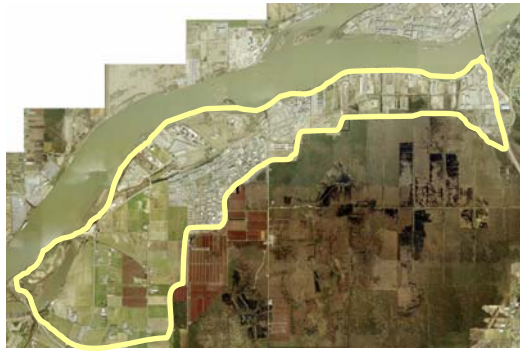
Some of the biggest issues to emerge during the phase 1 breakfast were transportation and logistics, pedestrian un-friendly design, and lack of amenities within short distances.

## Phase 2: Detailed Baseline and EIN Opportunity Assessment

Phase 2 of the Tilbury Project was launched on May 31, 2005. The Tilbury EIP Advisory Committee is actively seeking funding for this phase.

## Achievements

- DRS Earthwise (formerly Delta Recycling Society) secured funding from NRCan's Industrial Research Assistance Program to hire a research student. They are working to develop an EIN resource centre to serve Tilbury businesses.
- Crime Business Awareness Network (CrimeBAN) launched. Project with the Delta Chamber of Commerce and the Delta Police Department, to develop an online, real time database and website for the purpose of reducing crime rates in the industrial area.
- Delta Chamber of Commerce draft economic development strategy, with eco-industrial networking included as a key economic development tool
- The TEIP Advisory Committee welcomed members of the Fraser Basin Council. FBC is contributing in-kind staff time to facilitate the EIN process. FBC believes this project fits in well with their core programs, namely developing a "Sustainability-Inspired Regional Economy".
- TEIP Advisory Committee has welcomed new members WestBay Sonship Yachts, BC Hydro, Pistol & Burnes Coffee, Terasen Gas, and Canadian Autoparts Toyota Inc all of whom have business operations in the Tilbury Industrial Area.



*The Tilbury Industrial Area*

*Photo Courtesy of Corp. of Delta*



*The Tilbury Industrial Area*

## WHAT IS ECO-INDUSTRIAL NETWORKING (EIN)?

EIN embraces a systems approach and lessons from nature. In practice, EIN creates collaborative relationships (networks) between businesses, governments, and communities to more efficiently and effectively use resources, such as materials and energy, but also including land, infrastructure, and people.

In practice, this results in:

- "Waste = food" synergies
- Multi-objective infrastructure systems (utilities / services)
- Sustainable economic development;
- More efficient land use planning
- Green buildings, technologies & practices
- Greater returns for capital investment
- Leveraged partnerships between public and private organizations; and
- Integral consideration of ecological, social, and economic impacts



For more information about the Tilbury Eco-Industrial Partnership Project, visit

[www.http://www.corp.delta.bc.ca/eco-industrialpartnership/](http://www.corp.delta.bc.ca/eco-industrialpartnership/)

318 Homer St, Suite 506 Vancouver, B.C. Canada, V6B 2V2 ◆ 604-737-8506 ◆ [info@ecoindustrial.ca](mailto:info@ecoindustrial.ca)

#200, 2825 Saskatchewan Dr Regina, SK. Canada, S4T 1H3 ◆ 306-789-9799 ◆ [jc@ecoindustrial.ca](mailto:jc@ecoindustrial.ca)



[www.ecoindustrial.ca](http://www.ecoindustrial.ca)